



# GAT MONTHLY MEMBERSHIP PROGRESS REPORT

Results as of: 3/31/2023

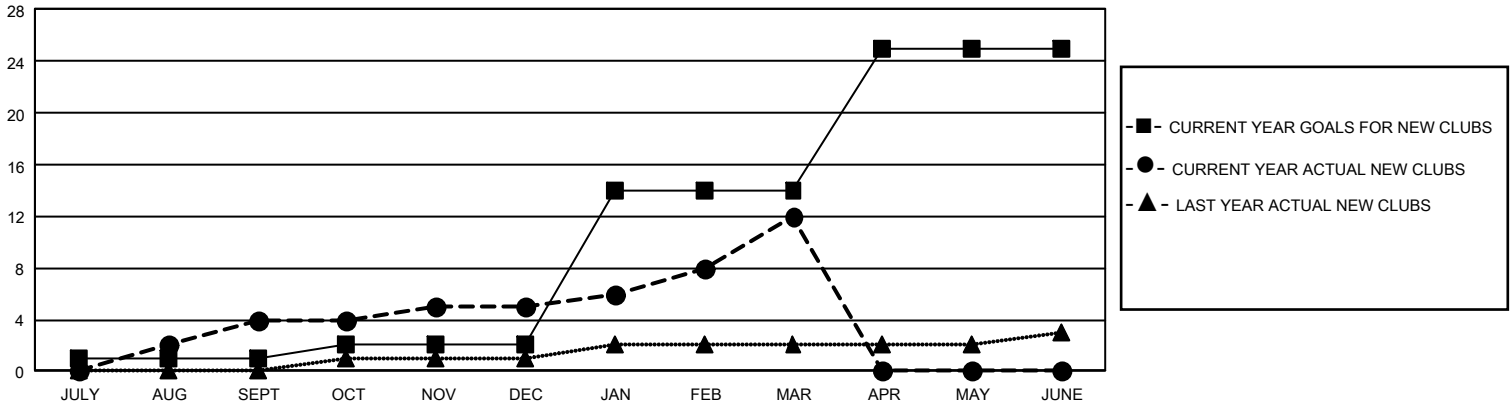
## GMT Constitutional Area 7, Group A

REPORT DOES NOT INCLUDE CLUBS IN UNDISTRICTED AREAS.

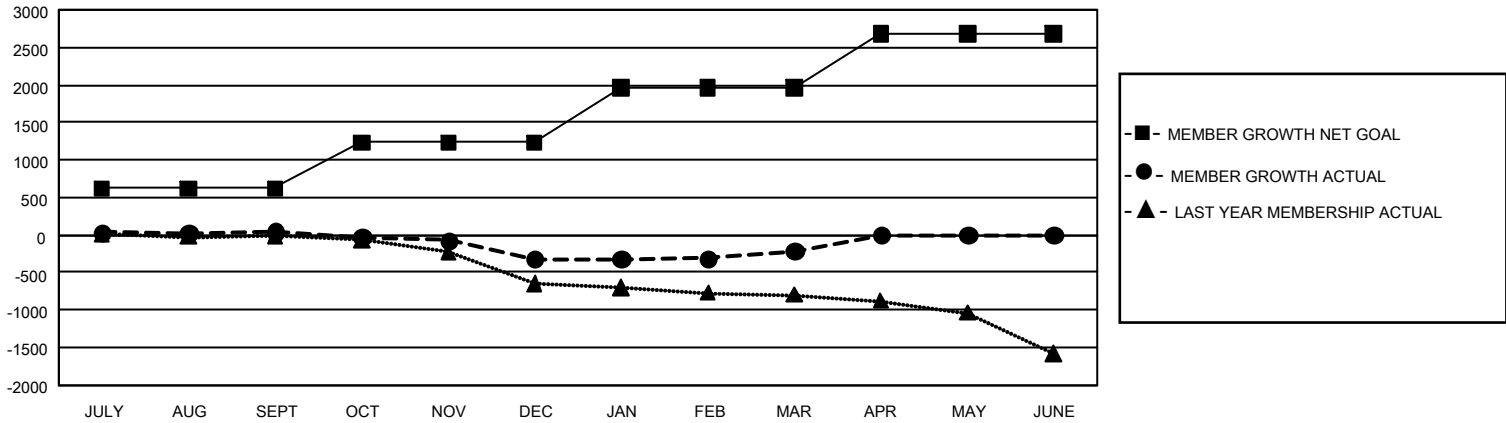
Clubs			
RESULTS FOR 2022-2023			
QUARTER	NEW CLUB GOAL	NEW CLUBS	DROPPED CLUBS
JULY/AUG/SEPT	3	4	7
OCT/NOV/DEC	3	1	7
JAN/FEB/MAR	36	7	0
APR/MAY/JUNE	33	0	0

Members			
RESULTS FOR 2022-2023			
QUARTER	MEMBER GROWTH NET GOAL	MEMBER GROWTH ACTUAL	DROPPED MEMBERS ACTUAL (including transfers)
JULY/AUG/SEPT	618	794	634
OCT/NOV/DEC	612	603	848
JAN/FEB/MAR	732	902	705
APR/MAY/JUNE	713	0	0

GOALS AND ACTUAL NEW CLUBS CUMULATIVE



GOALS AND ACTUAL MEMBERS CUMULATIVE



<b>DROPPED CLUBS: 14</b>	659 CLUBS OF 1,169 ADDED 1 OR MORE NEW MEMBERS	<b>GENDER DISTRIBUTION</b>	
		MALE 14,111 (62.81%) FEMALE 8,344 (37.14%) NON BINARY 6 (0.03%) PREFER NOT TO ANSWER 4 (0.02%)	
<b>DROPPED MEMBERS</b>		<a href="#">CLICK HERE FOR CUMULATIVE MEMBERSHIP DATA</a>	
DECEASED 283 CLUB CANCELLED 6 OTHER 1,898 <b>TOTAL 2,187</b>	TOTAL FAMILY UNIT MEMBERS 3,423 FAMILY MEMBERS PAYING HALF DUES 1,736		